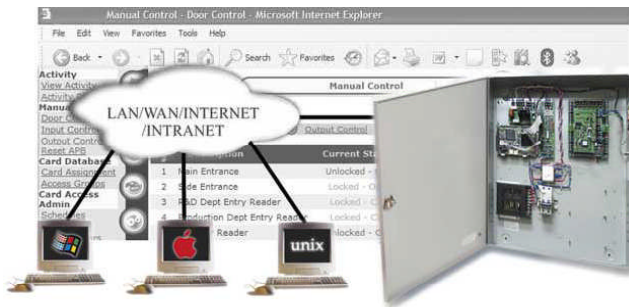




Access Easy Controller



- ▶ Supports access readers compliant with industrial Wiegand format
- ▶ 4 access readers expandable to 16 access readers
- ▶ Card Capacity up to 20,480 card holders
- ▶ Classify cardholders based on 254 access groups
- ▶ 255 time schedules, 32 holidays and 32 special holidays
- ▶ Anti-passback (APB) capabilities
- ▶ Intrusion monitoring up to 32 input and control points
- ▶ Memory storage record up to 20,479 transaction history
- ▶ Supports Attendance Capture
- ▶ E-mail or SMS Alert for critical events

Access Easy Controller, (AEC) is a new generation access controller that uniquely combines the features of a web server and security system functionality's into one complete unit. The CPU of the AEC uses a 32-bit microprocessor running at a blazing 300 MHz speed.

Any Computer of different operating system and hardware platform that runs a standard web browser program e.g. Internet Explorer, Netscape, or Firefox, can now be used to access, monitor, manage, and control any AEC which in turn controls the door, access readers, alarms, an other devices.

Functions

Web control Interface

AEC has a built-in web server that allows monitoring and programming of control parameters to be done on the fly through any standard Web browser program supporting Java, e.g. Internet Explorer, Netscape, Firefox and Opera. Different computers running different operating systems can access and operate the AEC easily as long as they have a standard Web browser program with JVM (Java Virtual Machine) installed.

Network Ready

AEC is a 'network-ready' system that connects easily to any TCP/ IP network via an Ethernet port. Any client computer in the network can then access the AEC to manage the database, monitor activity or control devices. For a single standalone configuration, AEC is connected to the computer via a standard Ethernet LAN crossover cable.

Multiple Entry Access Mode

There are 3 different entry access modes that you can set to cater to your security requirement.

- Card only
- PIN only
- Card & PIN

User-Definable Personal Identification Number (PIN)

Each cardholder is given the flexibility to choose his or her own 4 to 7 digit personal identification number.

Multi-Functional Card Assignment

Ability to assign a single card to perform multiple functions. A card can be programmed to work as

- Normal access card
- Attendance Capture card
- Alarm arming/disarming card.